



SWCD Supervisors

Paul Barsness

Area 1 Representative
Chairman

Mike Cleary

Area 2 Representative
Treasurer

Rod Froemming

Area 3 Representative

Bill Dropik

Area 4 Representative
Secretary

Ken Rutten

Area 5 Representative
Vice Chairman & Employee
Relations

SWCD Staff

Jerome Haggemiller

District Coordinator

Starla Arceneau

District Secretary

Andy Rice

District Technician

Danielle Anderson

Water Planner/Land Use
Technician

Jessica Albertsen

Education Outreach Coordinator

Ian Olson

Planner Technician

Kasey Jenc

PF Wildlife Biologist

NRCS Staff

Cory Walker

Conservation Service Team Leader

Mark Dybdal

Conservation Program Manager

Rich Geving

Soil Conservation Technician

Mike Yrjo

Civil Engineering Technician

Cindy Wojtkiewicz

Farm Bill Technician Aid

Chippewa Kick Off Meeting

The Chippewa River Watershed partners have worked together for many years, going as far back as 1998. A group called the Chippewa River Watershed Project (CRWP) has worked since that time to improve water quality in the watershed. This group completed watershed monitoring and worked to secure funding to do Best Management Practices (BMPs) and conduct education and outreach across the watershed. This group recently reorganized and is now called the Chippewa River Watershed Association (CRWA).



About three years ago the partnership worked to reorganize its Joint Powers Agreement. The partnership previously only included the Counties and the group worked to revise the agreement to include Soil and Water Conservation Districts (SWCDs). This group also began efforts to prepare for an application to the Board of Water and Soil Resources (BWSR) for the "One Watershed One Plan" program. The CRWA was successful in attaining a planning grant from BWSR.

This program allows counties to transition from county-based water plans to watershed-based planning. The planning area for the Chippewa River One Watershed One Plan includes portions of Otter Tail, Grant, Douglas, Stevens, Pope, Swift, Chippewa, and Kandiyohi counties. County and SWCD Boards in each of these counties have entered into a Joint Powers Agreement for the purpose of developing a watershed plan and to restore and protect the water and soil resources in the Chippewa River Watershed planning area. Pope Soil and Water Conservation District staff are acting on behalf of the partnership to coordinate this effort and to manage the fiscal duties.

The group held a public kick off and annual meeting on Tuesday, April 5th at 5:30 p.m. at the Minnewaska House in Glenwood, Minnesota. This meeting was an opportunity for citizens that reside in the watershed to provide feedback and learn more about monitoring, funding opportunities, and status of work of the Chippewa River Watershed Association and partners. The event was well attended with 100 participants at the event.



This planning effort will take approximately two years to complete and at its conclusion will provide state funding for conservation projects that are considered a priority for improving and protecting our resources as identified and agreed upon by the CRWA members.

Be a hero... Transport Zero!

Aquatic Invasive Species (AIS) have been part of our lakes ecosystem for many years now, but what exactly is it? Aquatic (water-dwelling) invasive species are non-native plants, animals, and other organisms that have invaded our natural ecosystems beyond their natural, historic range. Currently in Douglas County, there are Zebra Mussels, Eurasian Watermilfoil, Carp, Curly-leaf Pondweed, and Flowering Rush. Please help the county by doing your part and being a hero, by transporting zero! Clean, Drain and Dry all water related equipment after each use according to the state laws. If you suspect any new invasive species, please reach out to the office.

If interested in continuing your education and becoming one of the state's certified detectors, please register here for this great opportunity. Please note, the classroom portion will take place May 13th, and all the prerequisites online must be completed before the in person day. <https://maisc.umn.edu/detectors-core>



FIGHT THE SPREAD OF
AQUATIC INVADERS

AlexAreaLakes.org

Kids' Groundwater Festival

Douglas County is the home of the first and original Kids' Groundwater Festival, and on May 4th, Douglas SWCD held their 29th annual Kids' Groundwater Festival.

The theme this year was "Know The Map To Your Tap". Overall, the day was a huge success and it was great to be back in person. There was a total of 630 people which included presenters, volunteers, teachers and students. They were from 25 classes from 13 schools and 1 home school group.

The students had the opportunity to participate in many stations throughout the day ranging from: 3M Water Wizards, Aquatic Invasive Species (AIS), Bubbleology, Enviroscope, Flush the Kids, Furs and Feet, Glaciers, Groundwater Flow, Incredible Journey, Invertebrates and Water Quality, Streams, The House That Jack Built, Water Distribution, Water Drilling, Water Jeopardy, Water Pictionary, Water Treatment, What Water Would You Drink, Well Drilling and Wetlands.

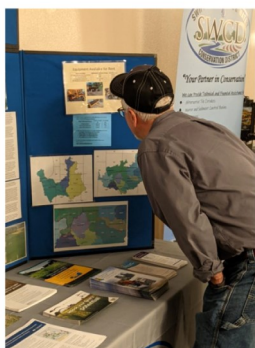
The success of this event would not be possible without the generosity of our volunteers, sponsors, and donors. Thank you very much!

Irrigation Clinic

On March 17, Douglas SWCD partnered with Stearns, Swift, Pope, and Kandiyohi SWCD's along with Minnesota Department of Agriculture to host our annual Irrigation Clinic. This year it was held in Benson, and we had a great lineup of presentations which covered Irrigation RCPP to Implement Innovative Irrigation Practices, Soil Health, Chemigation and Permit Requirements, Irrigation Management Strategies for

Improved Corn Water Productivity and Yield, Update for Climate Conditions for Minnesota: Observations Trends and

Outlooks, Managing Nitrogen for Profitable and Environmentally Responsible Corn Production in Irrigated Sands, and Strip Till To Improve Soil Health and Your Bottom Line. This clinic also offered 4.5 CEU in Soil and Water Management for participants. Without the help and support from our local sponsors, this event would not have been possible. We want to thank: Eagle Bank, Bonanza Valley State Bank, Ag. Country Farm Credit Services, Grand Irrigation Inc., EarthScout, Glenwood State Bank, Grimms, Thein Well Company and the Minnesota Department of Agriculture.





Tree Handout

In celebration of Arbor day, Douglas SWCD had their annual tree handout on April 29 and 30 at the tree shed. The weather was unpredictable for this time of year, which allowed for a rainy, chilly and windy pick up. There was just under 30,000 bareroot and potted trees that the district sold this year in a total of 299 orders! Staff were busy for almost a week getting them all bagged and tagged for pickup!



CRP and Habitat Management Workshop



The CRP & Habitat Management Workshop was held March 31, 2022 at the Viking Sportsmen building, hosted by Viking Sportsmen Club & Douglas County Pheasants Forever. Organization members and area landowners came to learn about the Conservation Reserve Program (CRP) & ways to help manage their land for wildlife habitat. A panel of local staff from the Douglas SWCD, NRCS, and Pheasants Forever as well as an area management vendor helped to lead discussion and answer questions. Conversation included everything from grassland establishment tips to CRP payments to management methods, timing, and more.

No-Till Drills Available

Douglas SWCD has two 10' Haybuster no-till drills available to rent out. These drills work well for seeding native grasses, pasture mixes, hay mixes, alfalfa, soybeans, and small grain. The rental rate is \$9.00 per acre (\$100 minimum) in Douglas County, and \$11 per acre (\$150 minimum plus an additional \$150 delivery fee) out of county. The SWCD will deliver the drill, calibrate it for your seed and pick it up when you are finished. Call the Douglas SWCD to reserve one of the drills.



Food Plot, Native Grass and Forb Seed Mixes

The Douglas SWCD has food plot seed available for landowners. Two different deer mixes are available, a perennial mix and an annual mix. The perennial mix includes Alsike Clover, Lanino Clover, Medium Red Clover, White Dutch Clover, and Chicory. The annual mix includes Forage Peas, Radish, Turnips, and Haybet Barley. There is also a Pheasant/Turkey mix containing Wildlife Sunflower, Wildlife Grain Sorghum, FSG Pearl Millet, and Sugar Graze II Sorghum Sudangrass. Each mix is packaged in one acre bags. Food plots are important to retain wildlife in your area after crops are harvested in the fall and to provide food for wildlife throughout the winter.

Native grass and forb (flowers) seed mixes are available to landowners for conservation practices. SWCD Staff will work with landowners on what type of seed mix is required for the practice they are enrolling into. Typically we have set mixes for the different practices, but we can work with landowners on custom mixes if desired. Native grass and forb plantings provide optimum habitat for wildlife and their deep root systems make them effective with erosion control.



One Watershed One Plan Updates

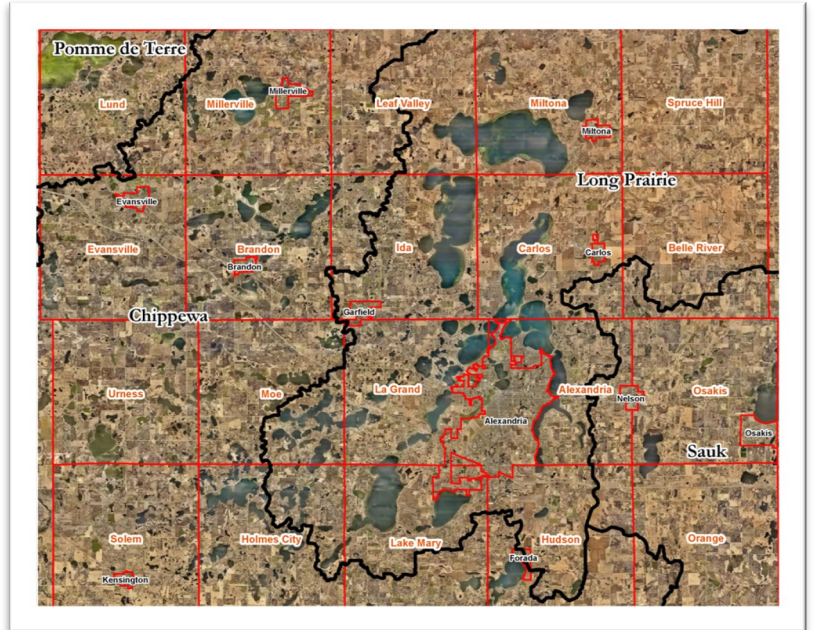
The One Watershed, One Plan (1W1P) program offers planning resources and staff support for groups working together to develop comprehensive watershed management plans. These plans break the traditional planning boundaries (county lines) to follow the water – from the watershed headwaters to its outlet. A completed, approved plan is a source of non-competitive funding for SWCD's to implement projects in prioritized areas. Douglas County has 5 watersheds and is participating in 4 plans (we opted out of the Red Eye Watershed plan due to its small amount of acreage within Douglas). Douglas is at the top of 4 of the watersheds, meaning all the water here flows out of the county. The Pomme de Terre and Chippewa rivers flow south to the Minnesota River while the Long Prairie, Red Eye, and Sauk rivers all flow towards the Mississippi River.

Pomme de Terre Watershed – Funding is available for projects within the watershed.

Sauk Watershed – The plan was approved by the state in August 2021, a bit more groundwork needs to be completed before project funding is available. The goal is to have project funding for prioritized areas available late 2022.

Long Prairie Watershed – Currently in the planning process, this will be completed winter of 2022/23. Project funding should be available the end of 2023.

Chippewa Watershed – Planning grant was approved by the state in August, the planning process has started soon and will take approximately two years to complete.



Mark your Calendars!

May 9 - SWCD Board Meeting (7:30 AM)

May 16 - State Envirothon in Fergus Falls

May 19 - Cooler Drop off day for water sampling. Have to office by 1 PM

May 30 - SDA Building and SWCD Closed (Memorial Day)

June 2 - Free Nitrate Clinic

June 13 - SWCD Board Meeting (7:30 AM)

June 13 - Cooler Drop off day for water sampling. Have to the office by 1 PM

June 20 - USDA Building and SWCD Closed (Juneteenth)

July 4 - USDA Building and SWCD Closed (Independence Day)

July 11 - SWCD Board Meeting (7:30 AM)

July 18 - Cooler drop off day for water sampling. Have it to the office by 1 PM



"The U.S. Department of Agriculture (USDA) prohibits discrimination in all of its programs and activities on the basis of race, color, national origin, age, disability, and where applicable, sex (including gender identity and expression), marital status, familial status, parental status, religion, sexual orientation, political beliefs, genetic information, reprisal, or because all or part of an individual's income is derived from any public assistance program. (Not all prohibited bases apply to all programs.) Persons with disabilities who require alternative means for communication of program information (Braille, large print, audiotape, etc.) should contact USDA's TARGET Center at (202) 720-2600 (voice and TDD). To file a complaint of discrimination write to USDA, Director, Office of Civil Rights, 1400 Independence Avenue, S.W., Washington, D.C. 20250-9410 or call (800) 795-3272 (voice) or (202) 720-6382 (TDD). USDA is an equal opportunity provider and employer."