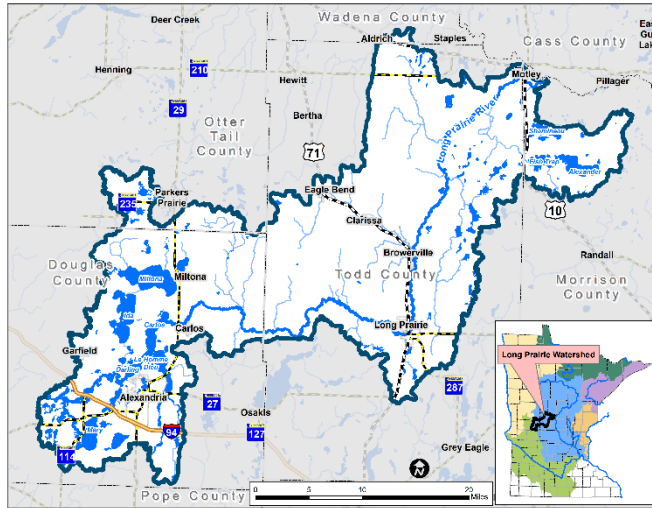




One Watershed, One Plan Progress

The Long Prairie River begins northeast of Alexandria at the outlet of Lake Carlos, then flows through the city of Long Prairie, and eventually drains into the Crow Wing River south of Motley. These areas comprise



the Long Prairie River Watershed. The Counties and Soil and Water Conservation Districts (SWCD) in this area (Project Partners on the right) began a state-funded planning process in 2021 to prioritize where to work and what to work on in the watershed.

The Long Prairie River Watershed One Watershed, One Plan effort formally began in March 2021 with a Public Kickoff event held online followed by a Citizen Advisory Committee meeting in April. At these meetings, participants learned about the watershed and planning process and had a chance to offer input by discussing potential issues and opportunities for the plan to address.

Issues gathered from the public were compiled and compared to priorities from state agencies and existing county water plans, resulting in a watershed issues list. The next step is to prioritize these issues to determine the priorities of the plan.

Project Partners

- Douglas SWCD
- Douglas County
- Todd SWCD
- Todd County
- Morrison SWCD
- Morrison County
- West Otter Tail SWCD
- Otter Tail County

Accomplishments

1. Public Kickoff
2. Land & Water Resource Narrative
3. Draft Issues

Next Steps

1. Prioritize Issues
2. Prioritize Resources

Project Contact

Danielle Anderson
Douglas SWCD
320.763.3191 Ext. 3
Danielle.Anderson@mn.nacdnet.net

Project Website

<https://www.co.todd.mn.us/1w1p>

Plan Timeline



We are here

